

FOR LEASE

Medical/Professional Office Suite

LENA BERCH

805.680.2279

Lena@BattagliaRE.com

CA Lic #00864783



2028 Village Ln #206 SOLVANG, CA

First Class building with ideal space for a medical practitioner or officer user. Spacious office suite with large main work area plus two private offices and a hallway of storage cabinets. Close to Santa Ynez Valley Cottage Hospital. Ideal for a physical therapist or similar use. Elevator service provided for this 2nd floor location, with common area restrooms close by.

SUITE & PROPERTY DETAILS

Suite Size	±1,208 SF
Lease Rate	\$1.95/SF/mo
Lease Type	NNN
Estimated NNN	\$0.85/SF/mo
Lease Term	3-5 Years
HVAC	Yes
Restroom	Common
Zoning	PO (Professional Office)

805.688.5333

www.BattagliaRE.com

2901 Grand Ave #D, PO Box 540, Los Olivos, CA 93441-0540

Information contained herein was obtained from sources believed reliable. While we do not doubt its accuracy, we do not guarantee it. Buyer to independently verify.

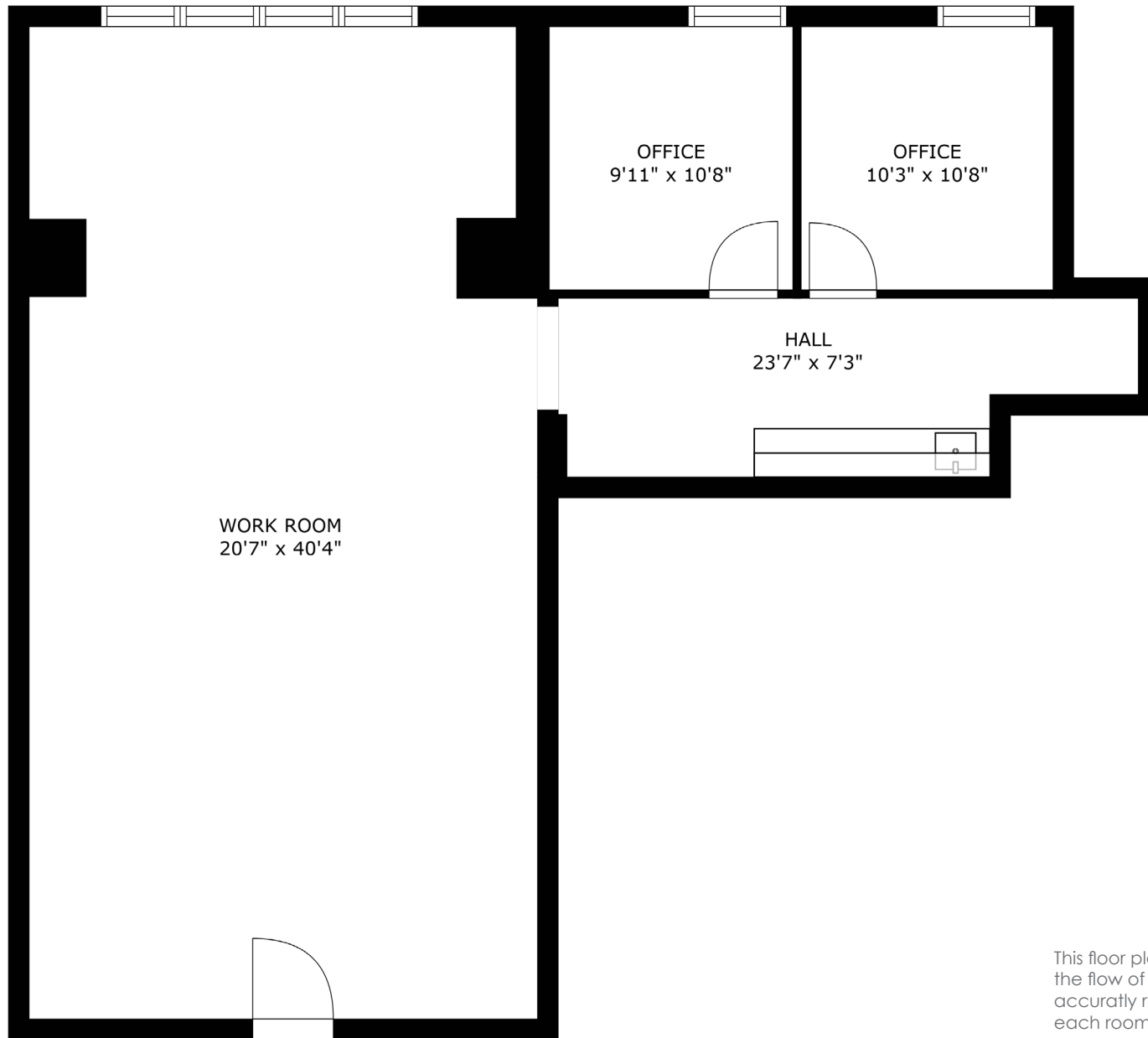


FOR LEASE: 2028 Village Ln #206, Solvang, CA



Information contained herein was obtained from sources believed reliable. While we do not doubt its accuracy, we do not guarantee it. Buyer to independently verify.

FOR LEASE: 2028 Village Ln #206, Solvang, CA



This floor plan is intended to represent the flow of the property and may not accurately represent the dimensions of each room or the property as a whole.

Information contained herein was obtained from sources believed reliable. While we do not doubt its accuracy, we do not guarantee it. Buyer to independently verify.

FOR LEASE: 2028 Village Ln #206, Solvang, CA

