

FOR LEASE

Retail/Office Suites in Solvang

LENA BERCH

805.680.2279

Lena@BattagliaRE.com

CA Lic #00864783



436 First St SOLVANG, CA

King Christian Tower is a charming office building located in the downtown corridor of the historic Danish town of Solvang, less than a block off of Copenhagen Dr. Many suites have windows, providing ample natural light. Building provides flexible suite sizes from 375 SF to 1,220 SF.

There is offstreet parking in the rear accessible to both first and second floor suites as well as street parking in the front.

The building was built in 1986 and designed by Ferdinand Sorenson, who is known as the Father of Solvang's Danish Architecture.

Suite Size:	±375 - 1,220 SF
Lease Rate:	Varies, see List
Lease Type:	Gross
Lease Term:	1 Year
Restroom:	Common Area
Zoning:	TRC

805.688.5333

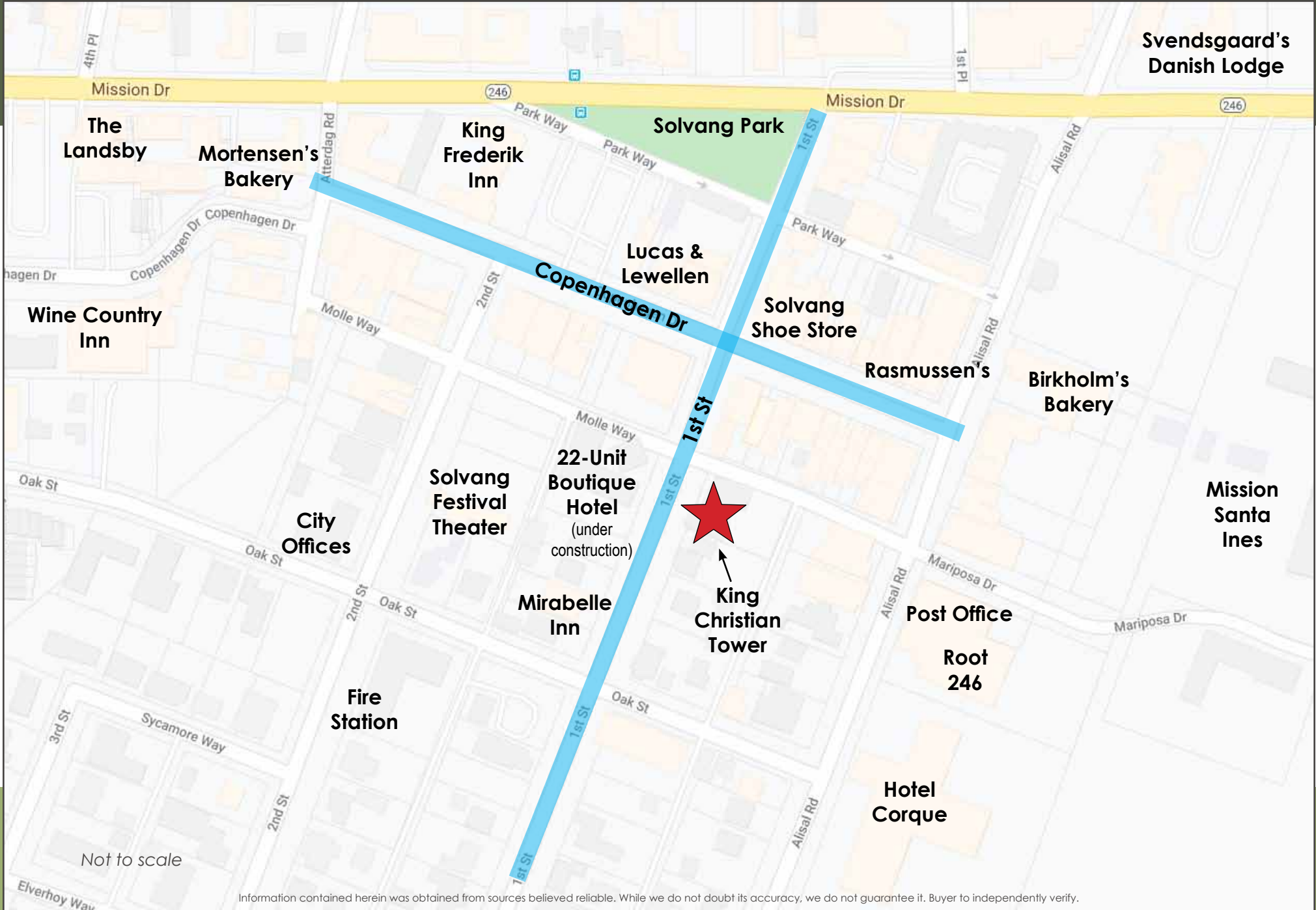
www.BattagliaRE.com

2901 Grand Ave #D, PO Box 540, Los Olivos, CA 93441-0540

Information contained herein was obtained from sources believed reliable. While we do not doubt its accuracy, we do not guarantee it. Buyer to independently verify.

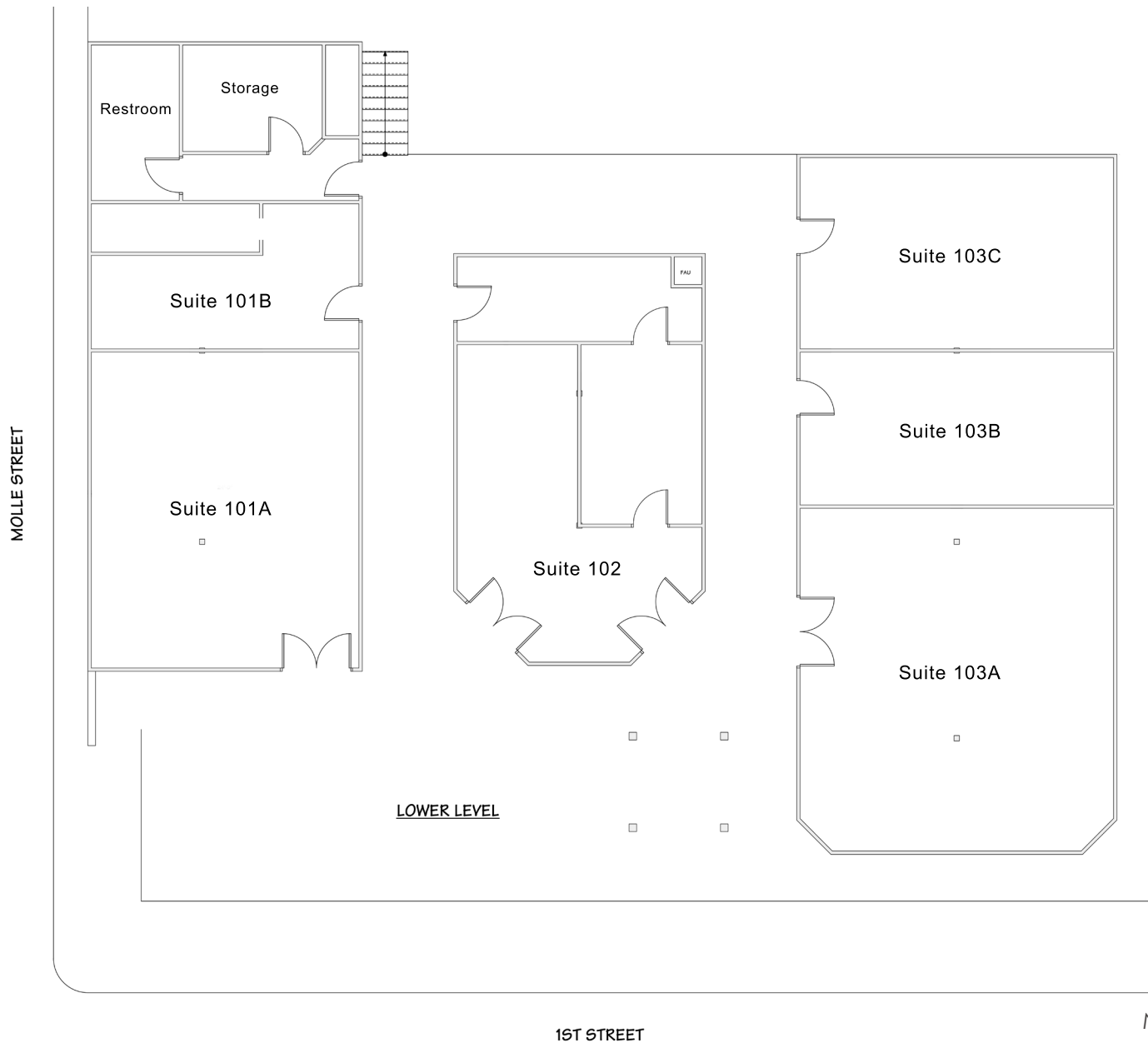


FOR LEASE: 436 1st St, Solvang, CA



Information contained herein was obtained from sources believed reliable. While we do not doubt its accuracy, we do not guarantee it. Buyer to independently verify.

First Floor



Information contained herein was obtained from sources believed reliable. While we do not doubt its accuracy, we do not guarantee it. Buyer to independently verify.

Suite 103 - Interior Photos



Information contained herein was obtained from sources believed reliable. While we do not doubt its accuracy, we do not guarantee it. Buyer to independently verify.



436 1st St, Solvang, CA

Available Suite(s)

Suite #	Type	Approx. Size (SF)	Lease Amount	Lease Type	Description
103 A	Office	765 SF	\$995	Gross	First floor office, open floor plan. Lots of windows and light. Available now