

FOR LEASE

Vacant Land on Prime Corner

STEVEN R. BATTAGLIA
805.680.6431
srb@BattagliaRE.com
CA Lic #01318215



1704 Mission Dr

SOLVANG, CA

Development Opportunity. One of the most visible corner lots in all of downtown Solvang is available for **long term ground lease**. This flat, buildable lot sits on a signalized corner and boasts 20,700 trips per day, offering exceptional exposure. Its location adjacent to the public city parking lot will provide your tenants with an abundance of parking. Call for more details.

- Highly Visible Location
- Signalized Corner Lot
- 20,700 Average Daily Trips
- Flat and Ready to Build
- Located in Solvang's Downtown Tourist Corridor

PROPERTY DETAILS

Property Type	Vacant Land
Lot Size	±16,988 SF
Zoning	TRC (Tourist Related Commercial)

805.688.5333

www.BattagliaRE.com

2901 Grand Ave #D, PO Box 540, Los Olivos, CA 93441-0540

Information contained herein was obtained from sources believed reliable. While we do not doubt its accuracy, we do not guarantee it. Buyer to independently verify.



FOR LEASE: 1704 Mission Dr, Solvang, CA

LOCATION

The property is located at the southeast corner of Alisal Rd and Mission Dr (Hwy 246), Solvang, CA

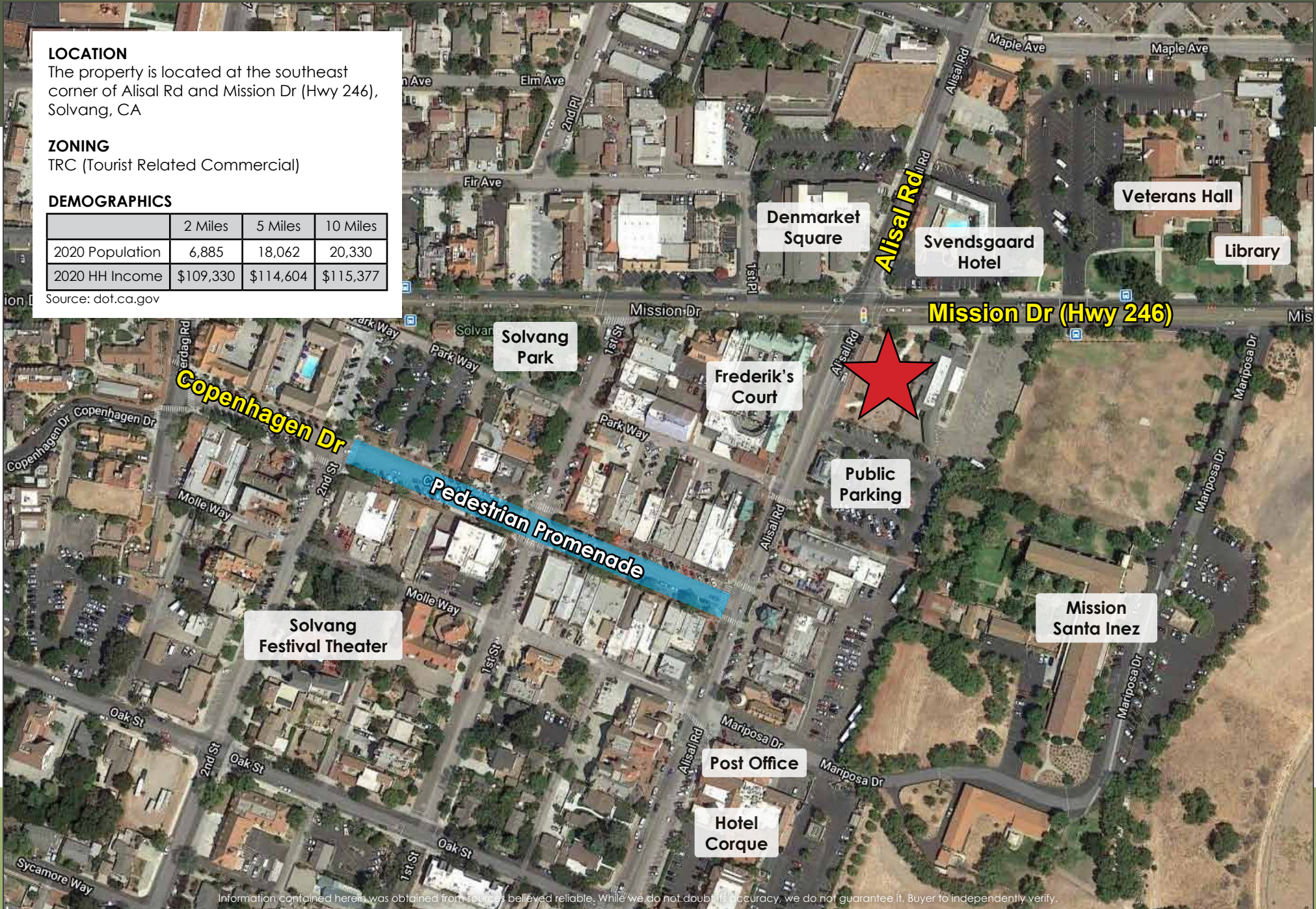
ZONING

TRC (Tourist Related Commercial)

DEMOGRAPHICS

	2 Miles	5 Miles	10 Miles
2020 Population	6,885	18,062	20,330
2020 HH Income	\$109,330	\$114,604	\$115,377

Source: dot.ca.gov



Information contained herein was obtained from sources believed reliable. While we do not doubt its accuracy, we do not guarantee it. Buyer to independently verify.