

FOR LEASE

High Traffic Office/Retail

STEVEN R. BATTAGLIA
805.680.6431
steve@battagliare.com
License #01318215



AVAILABLE SUITES

Retail: 460 - 1,500 sf Available Now
Office: 1,275 - 1,300 sf Available Now

3640 Sagunto Rd

Santa Ynez, CA

Retail: Ground level retail space with desirable frontage on Sagunto Street. Ideal for gifts, clothiers, wine tasting, or professional services. There are lots of windows and ample parking. Great downtown Santa Ynez location.

Office: Professional offices available. Flexible configurations and views of the valley and the coastal mountains.

Warehouse: Open warehouse space available with ground level roll up door, 1-man door, and 15' clear ceilings.

PROPERTY DETAILS

Address: 3640 Sagunto Rd
Zoning: C2 General Commercial
Restroom: Common & Private
Parking: 2.7/1000
Yr Built: Approx. 1984
CSO: 3%

AVAILABLE SUITES

Retail Suites Available

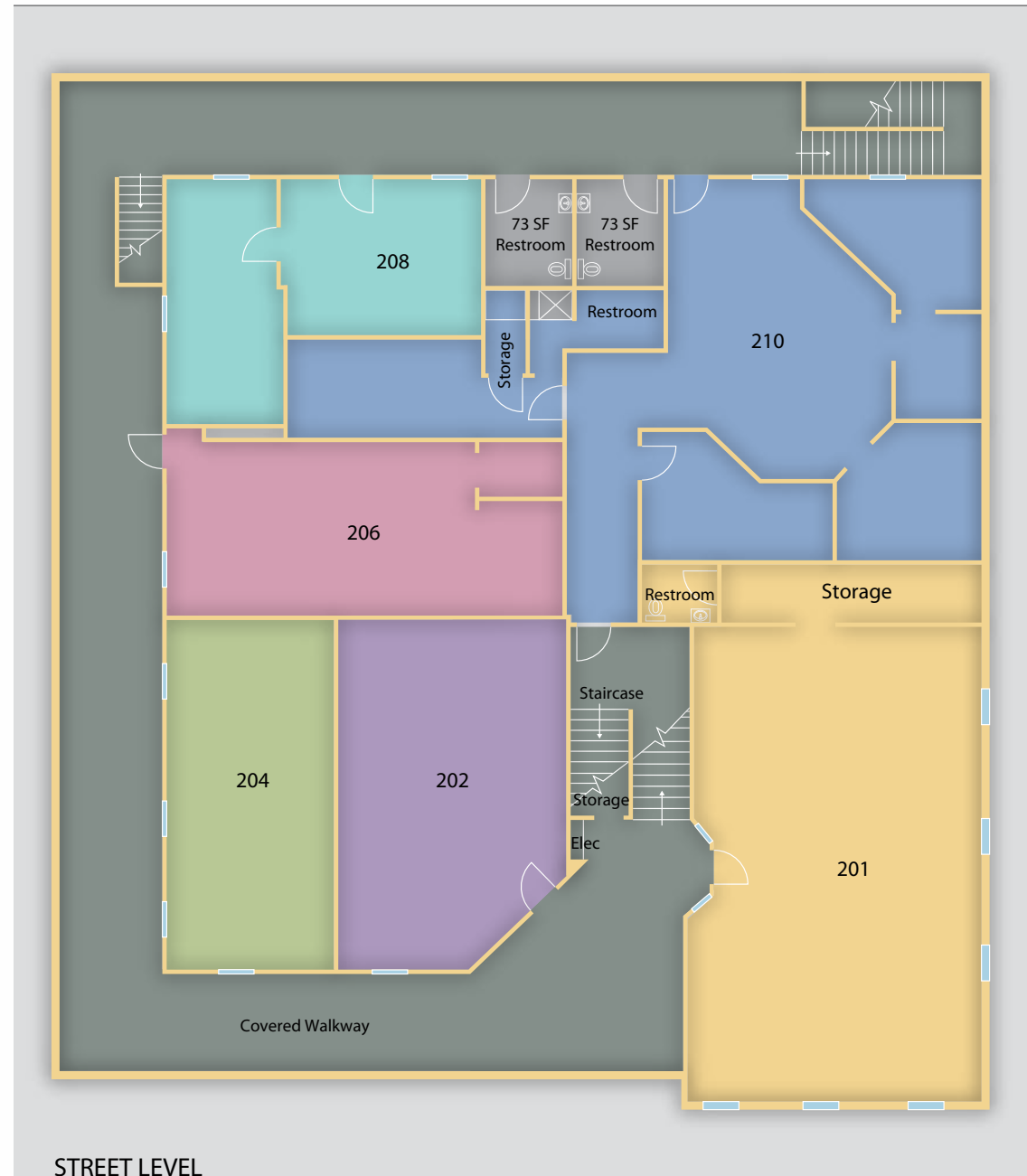
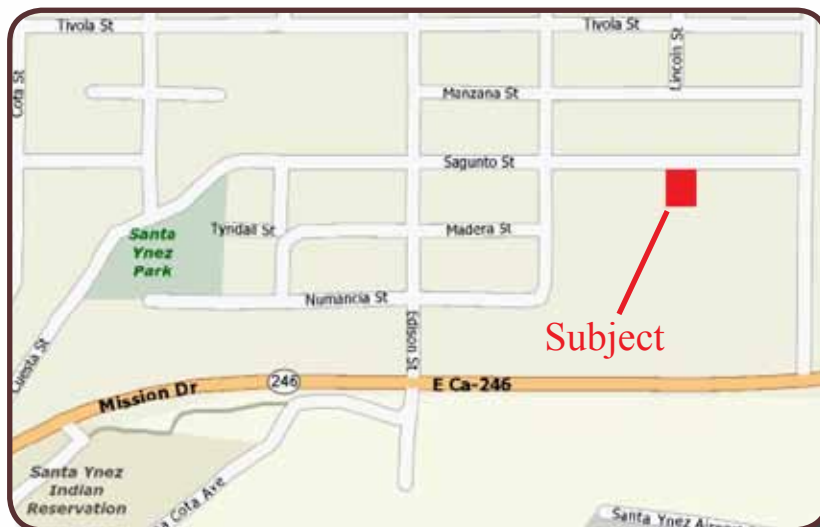
- Suite 100 – approx. 2,138 sf @ \$1.15/sf NNN (\$0.40/sf)
- Suite 202 – approx. 520sf to 1,600sf @ \$2.25/sf NNN
- Suite 204 – approx. 460 sf @ \$2.25/sf NNN (\$0.40/sf)
- Suite 206 – approx. 520 sf @ \$2.25/sf NNN (\$0.40/sf)

Offices Available (1 -3 Yr Lease)

- Suite 302 – approx. 1,300 sf @ \$1.25/sf NNN (\$0.40/sf)
- Suite 305 – approx. 975 sf @ \$1.25/sf NNN (\$0.40/sf)
- Suite 210 – approx. 1,275 sf @ \$1.65/sf NNN (\$0.40/sf)

Warehouse Suite Available

- Suite 101A – approx. 1,200 sf @ \$.95/sf NNN (\$0.40/sf)



STREET LEVEL

